

DEDICATION PROGRAM

FOR THE NEW

Ballard Community Senior High School

HUXLEY, IOWA

Serving the Communities of Cambridge, Huxley, Kelley and Slater

SEPTEMBER 9, 1962

2:00 p.m.

Open House Following the Program

BOARD OF EDUCATION

L. J. Martin, President

Ole Eide
Kermit Granseth
Burton Tesdall, Secretary

Gerrish Severson
Clyde Wilson
Tom Dunlap, Treasurer

* * *

Fred J. Rohde, Superintendent

James Mumper, Principal

* * *

*How do you measure education? ... pounds? quarts? inches?
Education can only be measured by RESULTS*

DEDICATION PROGRAM

2:00 P. M.

✱

InvocationRev. Leo Bjorlie
Bethlehem and Bethany Lutheran Churches
Slater and Kelley

Presentation of the BuildingMr. Harold Bullington
Karl Keffer Associates, Des Moines

Acceptance of the BuildingMr. L. J. Martin
President, Board of Education

Acceptance of FlagMr. James Mumper
Principal, Senior High School

Dedicatory AddressMr. Fred J. Rohde
Superintendent of Schools

BenedictionRev. Harold Rye
Fjeldberg Lutheran Church
Huxley

VISITATION OF BUILDING

✱ ✱ ✱

After the Dedication Program, the building will be open for your inspection. Members of the high school class officers and the student council will assist in explaining the various areas of the building.

HISTORY OF THE DISTRICT

The Ballard Community School District became an official school district on July 1, 1957.

The reorganization election was held on May 1, 1957. The result was a resounding 89% approval by the voters. Additional area was added by two later reorganizations. Miss Eulalia Jensen, Administrative Assistant in the County Superintendent's Office, is credited with naming the district after the Ballard Creek, which flows almost directly across the entire district.

Five special bond elections were held before the voters finally approved the bond issue for the new Senior High School Building and the site. There is not enough room on this page to thank and list all of the hard working citizens who worked many long hours on the reorganization and bond issue proposals.

For the first year of operation, no Superintendent of Schools was appointed. Each building administrator from the former districts operating schools met with the Board of Education each month. Mr. O. E. Lester, who was Superintendent of the former Huxley Consolidated School District, was appointed Superintendent of the Ballard Community School District in 1958 and served in that position until his resignation in 1961. Mr. Rohde has served in this capacity since July 1, 1961.

The present Board of Education has served the District since its origin. Mr. O. E. Eide member at large, represents the former rural independent school districts; Mr. L. J. Martin, the Cambridge Area; Mr. Gerrish Severson, the Huxley Area; Mr. Clyde Wilson, the Kelley Area; Mr. Kermit Granseth, the Slater Area; Mr. Tom Dunlap is Treasurer; and Mr. Burton Tesdall is Secretary. The Board of Education has adopted a policy that the Presidency of the Board will be rotated each year. Credit and praise are due all of these men for the many faithful hours that they have devoted to the students and patrons. This is a non-paying position and upon their shoulders rest the decisions and policies that affect everyone.

Forty-seven teachers and administrators were employed the first year of operation. There will be forty-five teachers and administrators employed for this school year. In 1957-58, the total enrollment was 814 students, the school census (school age 5-21) was 1010. This past year the total enrollment was 939 and school census was 1134. There will be 77 people employed by the District for the 1962-63 school year. This includes teachers, bus drivers, custodians, secretaries, and other school personnel.

F. J. R.

COSTS AND STATISTICAL FACTS

Bond issue	\$505,000.00
Bond interest rate	3.25% to 3.85%
Cost of building:	
General contract	\$305,486.00
Mechanical contract	80,048.36
Electrical contract	33,460.00
Science equipment	11,837.00
Gymnasium equipment	14,540.28
Kitchen equipment	9,706.25
Library equipment	4,645.55
Classroom equipment and furnishings	14,966.19
Shop equipment	6,779.97
Site	20,000.00
Development of site	21,483.49

RECOGNITION

Architects and Engineers
Karl Keffer Associates Des
Moines, Iowa

★ ★ ★

General Contractor
Gilbert Manufacturing and Construction Company
Iowa Falls, Iowa

★ ★ ★

Mechanical Contractor Rhoades
Plumbing and Heating Jefferson,
Iowa

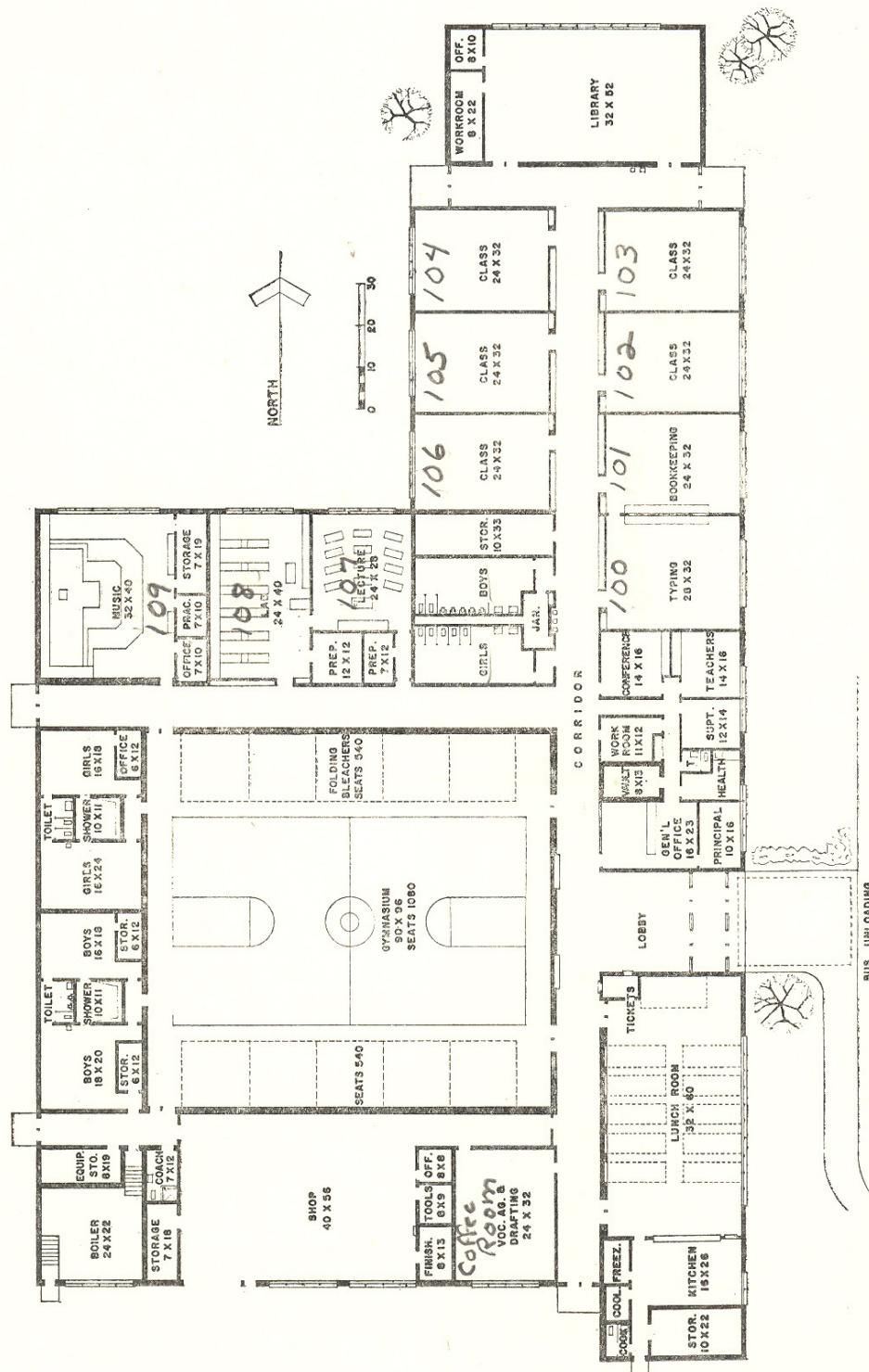
★ ★ ★

Electrical Contract Mayhew
Electric Company Vinton,
Iowa

SUPPLIERS

Science Equipment	Sheldon Furniture Metropolitan Supply Company Cedar Rapids, Iowa
Gymnasium Bleachers	Wayne Bleachers Wayne Sales Company Grinnell, Iowa
Basketball Baskets	Berlin Backstops Ron Bales Sales Company Emporia, Kansas
Hot Lunch Equipment	Bolton and Hay Company Des Moines, Iowa
Hot Lunch Tables	Schrieber Tables Piggott Supply Company Des Moines, Iowa
Classroom Furniture	Brunswick Furniture J. S. Latta Company Cedar Falls, Iowa
Shop Equipment	Midwest Shop Supplies Sioux City, Iowa
Draperies and Sound System	Midwest Visual Instruction Service Des Moines, Iowa
Science Room Seating	Haywood-Wakefield Furniture Waynes Sales Company Grinnell, Iowa
Library Furniture	Heller Furniture Klown School Supply Company Des Moines, Iowa.
Music Room Risers	Fort Smith Risers Haldeman-Homme Company Des Moines, Iowa
Other Suppliers	Marshall Office Supply Marshalltown, Iowa Missouri-Kansas Chemical Company Kansas City, Missouri West Chemical Company Chicago, Illinois Nu-Ball Manufacturing Company Des Moines, Iowa

FLOOR PLAN for BALLARD COMMUNITY SENIOR HIGH SCHOOL



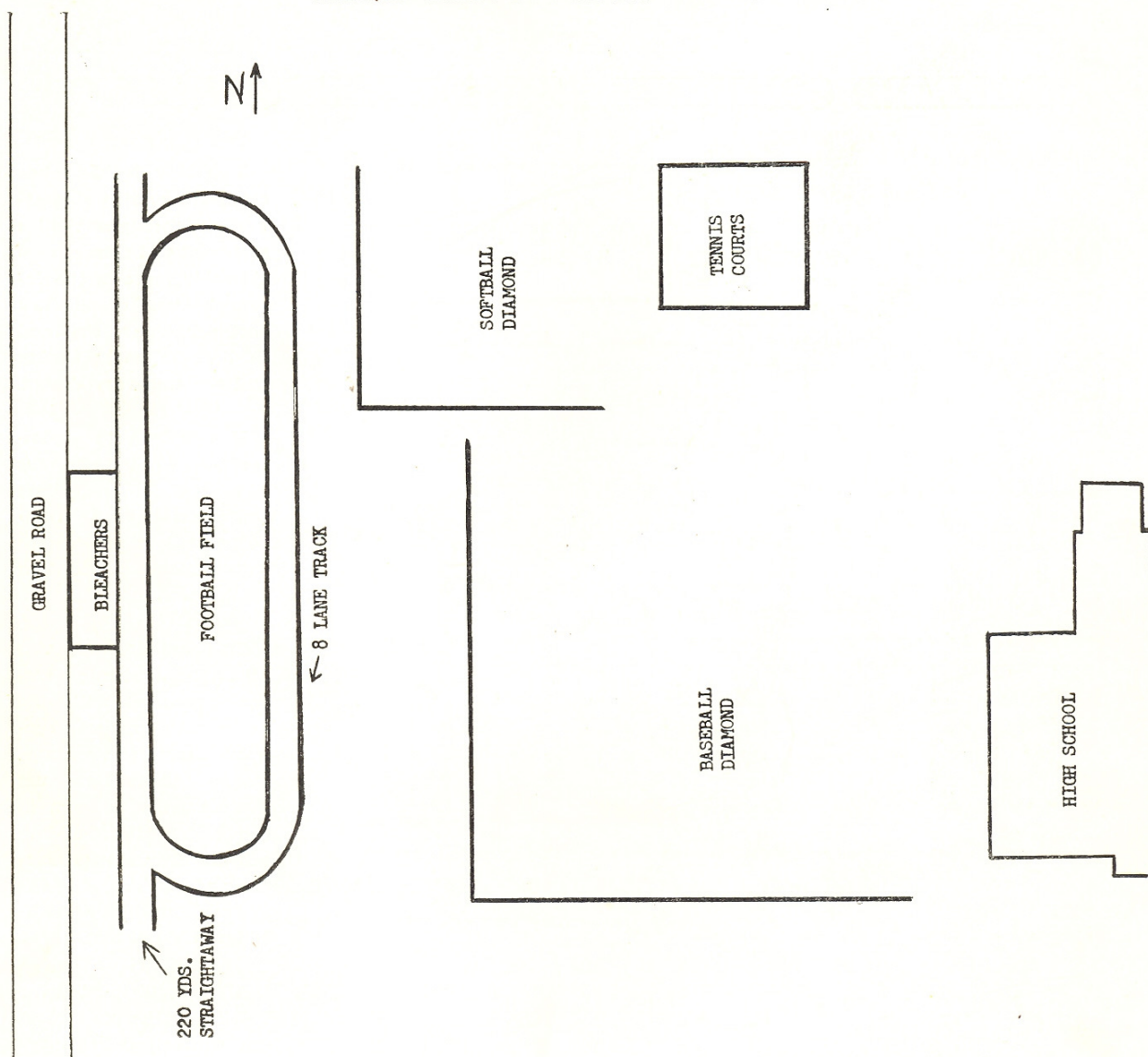
This new building has attracted considerable attention throughout the state and will attract considerably more in the future because of the low cost per square foot and for its functional planning and contemporary design.

It was built to accommodate 300 students plus at a maximum usage and provisions have been incorporated to provide for future classroom additions as the need arises.

This building contains all of the academic classrooms needed with the exception of a home economics room and a stage. Present plans have the home economics room in the junior high building and the dramatic productions will be staged in the Slater Elementary Auditorium-Gymnasium.

All the equipment in the building is the most modern contemporary equipment available. There is a central clock system to regulate classes and a sound system that allows any type of program to be beamed into any one classroom or all classrooms as the need arises. Provisions have also been made for television programs into the classrooms and the commercial and Spanish rooms have outlets for all of the modern equipment now needed for quality instruction.

SITE DEVELOPMENT PLAN



This is the reproduction of the master site development plan. All of the parking area and drives have been covered with crushed limestone rock. The entire area has been developed by the Lewis & Zagar Company of Slater. Permanent seeding of the entire area has been completed with a mixture of rye grass and blue grass. The front area of the school was sodded by the Roger Cameron Sodding Company of Ames. Future planting of shrubbery and trees is to be completed this Fall. The track has been laid out. Cinders and tiling have been installed. The wood curbing around the track has been started and will be completed this Fall so that the track will be ready for sports competition next Spring. The football field and baseball and softball diamonds will be available for use next Spring but it will be several years before funds will be available for lights for these areas.

Our thanks to Ole and Sophus Berhow of Huxley who have done all of the cultivating, tilling and seeding of the entire site.